

Distributed
Sniffer
System
/RMON

The ultimate network troubleshooting tool

combined with industry-standard RMON2

in a single cost-effective solution

Distributed Sniffer System*

- **Network Associates Sniffer*** — *the most widely used tool to reduce network downtime.*
- **The Sniffer Enterprise Expert System** — *yields the fastest time to detect, diagnose, and repair network failures. Network Associates' advanced technology, industry-leading expertise, and strategic partnerships result in the premier expert system with the broadest coverage and expert knowledge across the widest set of networked applications.*
- **The most comprehensive set of protocol decodes.** *Supporting over 400 different protocols, more than any other network analyzer, Distributed Sniffer System/RMON provides unparalleled visibility into network traffic.*
- **The world's most effective network instrumentation.** *The best, most widely used tool for optimizing your network, combined with industry-standard RMON for long term monitoring, in a single, cost effective, easy to install package.*

The combination of 24x7 automatic problem identification by the Sniffer Enterprise Expert reduces the amount of time spent troubleshooting, allowing network professionals to take immediate corrective action:

- To improve application response time
- To minimize costly downtime
- To help isolate and resolve network performance problems... immediately

Sniffer Enterprise Expert has the broadest coverage of any network tool. The following experts can automatically detect, diagnose, and help resolve problems

Routing Expert
Database Expert
Microsoft Expert
Frame Relay Expert
Network and Internet Expert

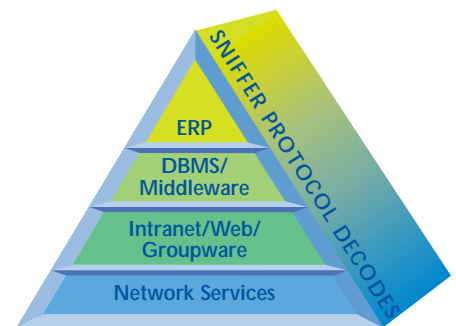
Distributed Sniffer System/RMON

Distributed Sniffer System/RMON is the industry's leading network fault isolation and performance management solution. The combination of unique Sniffer Expert technology, the high-speed intelligence of the full-powered Distributed Sniffer System, and the broadest and deepest knowledge and experience base results in the unique ability to anticipate, isolate and diagnose network faults and performance problems. That's why more network managers have chosen Network Associates' Sniffer technology as their network analysis and fault isolation tool than any other product.

Sniffer Enterprise Expert yields the fastest time to resolve problems in any network — across the most topologies, network protocols, and networked applications. Unlike simple RMON2-only data collection probes, Distributed Sniffer System/RMON agent puts expert intelligence at the source of the problem providing a solution that scales to the enterprise without overloading critical LAN and WAN segments with unnecessary management traffic.

This allows the Distributed Sniffer System/RMON software to proactively monitor every critical segment, find potential problems, and recommend proven solutions all in real time.

Distributed Sniffer System/RMON solution is the leading performance management tool that analyzes all seven layers of the OSI model for Total Network Visibility*. It observes network traffic to "learn" its unique patterns and characteristics in order to better identify and solve network problems. This greater depth of visibility enables Distributed Sniffer System/RMON to accurately pinpoint a problem's origin and facilitates the fastest time-to-resolution. It also helps you avoid costly network slowdowns and outages and keeps everyone more productive. Distributed Sniffer System/RMON's charter is simple: keep the network up and running at peak performance.



Sniffer Enterprise Expert diagnoses problems in more network applications than any other network analyzer tool.

Industry-Standard RMON2

- **Supports application monitoring, capacity planning, and intelligent network investment decisions.**
- **Full coverage, high performance, industry-standard RMON2 capabilities.**
- **Support for shared LAN, switched LAN and WAN environments.**
- **Support for high speed ATM and Gigabit networks.**

Distributed Sniffer System/RMON software is a key part of an overall network management strategy to eliminate network downtime, simplify network management and planning, and reduce the costs of operating and managing your critical networking resources. Industry standard RMON2 is the ideal source of long term statistics to support an enterprise view of changing application traffic patterns and network utilization. Combined with Network Informant, Network Associates' enterprise reporting and analysis solution, this information becomes the basis for strategic network and business investment decisions.

Distributed Sniffer System/RMON server is based on Network Associates' next-generation Windows Sniffer architecture, and incorporates an integral high performance SNMP-manageable RMON2 agent that fully implements industry standards, along with complete Expert Sniffer functionality. The system has been designed from the ground-up to provide simultaneous RMON2 and Sniffer Enterprise Expert in a single, cost effective package.

Industry Standards Compliance

SNMP Version 1 support

MIB II - RFC 1213

RMON1 - RFC 1757 (Ethernet - all groups)

- RFC 1513 (Token Ring - all groups)

RMON2 - RFC 2021 (all groups)

- RFC 2074 (RMON protocol ID's)

Frame Relay DTE MIB - RFC 2115

Network Associates Distributed Sniffer System/
RMON MIB (extensions)

Network Associates WAN MIB (extensions)

Value-added Standards Extensions

Switch Control

Cisco CDP

Cisco VTP

Cisco ISL

802.1Q†

Roving RMON support

Manageability

24x7 data collection

Complete end-to-end monitoring

Provides data collection for:

Service Level Documentation

Capacity Planning

Baselining

Policy Management

Utilization Reporting

Set SNMP traps for multiple addresses

Customizable filtering for any application

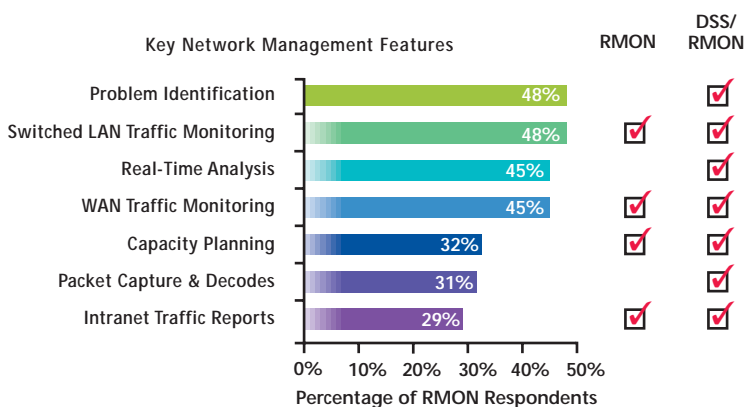
Central management and updates of probe software

Support for group probe management†

Management port for out-of-band probe communication

PPP connection for out-of-band probe management

Distributed Sniffer System/RMON: Effective Network Monitoring & Troubleshooting



Total Coverage

“The RMON market will begin to overlap with the protocol analyzer market in the 2000 time frame. When that overlap happens, analyzers will remain the dominant market”

Elisabeth Rainge,
Research Manager, Network Mgmt
International Data Corp

Distributed Sniffer System/RMON supports all major network topologies, speeds, and connection methods. For the first time, a common, comprehensive solution that supports all of the network management team’s operational needs — monitoring, planning, troubleshooting, and reporting — can be deployed enterprise wide.

Network Topologies Supported

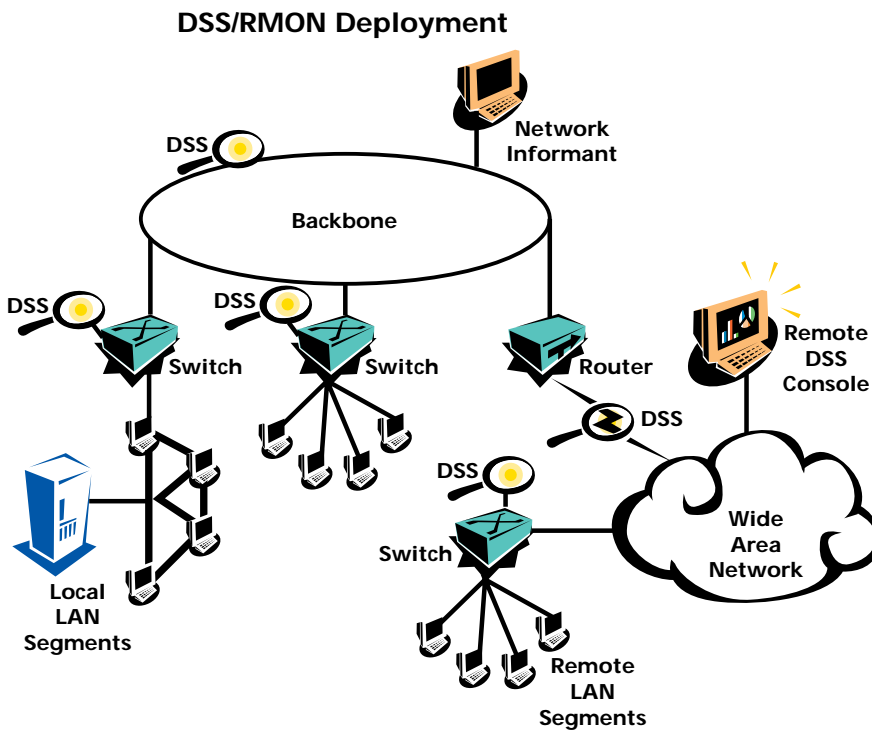
LAN: 10/100Mb Ethernet (shared and switched), 100Mb Full Duplex Ethernet, Token Ring, FDDI
WAN: RS-232, V.35, T1/E1, T3 (HSSI)
HIGH SPEED: ATM OC-3, ATM OC-12, † Gigabit Ethernet†

Unlock the Knowledge Network Informant Suite

The ideal tool to make sense of the vast quantities of data collected in a fully instrumented network is the Network Informant Suite, the advanced reporting application from Network Associates.

Network Informant software can collect and report network information from any standard SNMP or RMON source. But only Network Informant can combine this information with the expert analysis provided by Network Associates’ Sniffer agents.

Reports provide information on service delivery, cost control, and enterprise network status. The result gives managers a unique understanding of their network characteristics and performance both now, and for future planning.



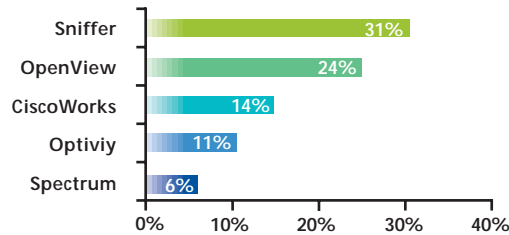
Distributed Sniffer System/RMON agents can be deployed throughout the enterprise for complete coverage for monitoring, planning, troubleshooting, and reporting.

† Scheduled for 1999 availability

Total Uptime

Sniffer is the ultimate tool to help shorten Network Downtime

Percentage of 100 Network Managers Responses to Question



Source: Business-Centric Network Management and Downtime Costs 1997 by Infonetics Research, Inc.

Never has the job of managing a network been as challenging as it is today. Networks have mushroomed in size and complexity, and play an increasingly critical role in the success of your business. That's where Network Associates' Distributed Sniffer System/RMON solution comes in. A new idea in sophisticated network management.

- **What if**
The best, most widely used tool for assuring network availability and maximum uptime
- **Was combined with**
The industry standard for network monitoring and management
- **You would have**
The most effective network instrumentation ever developed

Distributed Sniffer System/RMON

- the fully functional Network Associates' Sniffer software — the "troubleshoot and fix" tool chosen by more network managers than any other network analyzer.
- a high performance, integral RMON2 agent — the industry standard choice for collecting network management information

All in a single, self contained solution — at about the same price as an RMON-only probe. The most advanced combination of tools — fast response to critical problems and complete network performance information for strategic planning on every network segment.

The result

- All segments can now be fully instrumented.
- Complete coverage of all major topologies, speeds, and interfaces.
- Highest levels of network availability — Distributed Sniffer System/RMON is in place when and where you need it.
- The network management information you need for making strategic business decisions.

"We have found that end-users are requiring a technology combination of traditional network analyzers and RMON tools to more effectively meet their network management needs."

Mike McConnell
Sr. Industry Analyst
Networking
Infonetics Research

Professional Services

Expert consulting, comprehensive education, and essential product support

to maximize the performance and reliability of your network

Professional Consulting Services is ready to assist during all stages of your network growth, from planning and design, through implementation, and with ongoing management. Our consultants provide an expert supplemental resource and independent perspective to resolve your problems. We help integrate our products into your environment and troubleshoot or baseline network performance. Our consultants also develop and deliver custom solutions to help accomplish your project goals from lengthy large-scale implementations to brief problem-solving assignments.

Total Education Services builds and enhances the skills of all network professionals through practical hands-on instruction designed to be applied immediately back on the job. Our technology curriculum focuses on network fault and performance management, and covers all levels of problem solving. We also offer modular product training so you understand the features and functionality of your new software. Courses are offered year-round at our educational centers or can be customized for delivery at your location. All courses exist within a learning path that provides the educational steps to the highest levels of expertise. Network Associates is a founding member of the Certified Network Expert (CNX*) consortium.

PrimeSupport* Services is essential to making the most of your investment in Network Associates* products from installation throughout the life of your products. Several PrimeSupport Service options designed to suite your support needs are available in combinations of benefits: web access to updates and technical solutions, 12x5 or 24x7 telephone access to technical experts, proactive support, assigned support engineers, and response charters.



For more information on products, services, and support, contact your authorized Network Associates sales representative.

CORPORATE HEADQUARTERS

3965 Freedom Circle
Santa Clara, CA 95054-1203
Tel (408) 988-3832**
Fax (408) 970-9727

**Call for additional Worldwide Sales Offices

Visit our Website



<http://www.nai.com>